
ShipConstructor Installation Guide

By Albacore Research Ltd.

Copyright Notice

This software is protected by: both United States and Canadian copyright laws and international treaty provisions. Albacore Research Ltd. authorizes you to make archival copies of the software for the sole purpose of backing up our software and protecting your investment from loss. Otherwise, it is illegal to make copies of the program without written permission of Albacore Research Ltd.

Warranty

With respect to the physical diskettes and physical documentation enclosed herein, ARL warrants the same to be free from defects in material and workmanship for a period of 90 days from the date of purchase. In the event of notification within the warranty period of defects in material or workmanship, ARL will replace the defective diskette or documentation. If you need to return a defective product, call ARL Support to obtain return authorization. The remedy for breach of this warranty shall be limited to replacement and shall not encompass any other damages, including but not limited to loss of product, and special, incidental, consequential, or other similar claims.

ARL specifically disclaims all other warranties, expressed or implied, including but not limited to implied warranties of merchantability and fitness for a particular purpose with respect to the defects in the diskettes and documentation, and the program license granted herein in particular, and without limiting operation of the program license with respect to any particular application, use or purpose. In no event shall ARL be liable for any loss of profit or any other commercial damage, including but not limited to special, incidental, consequential, or other damages.

Governing Law

This statement shall be construed, interpreted, and governed by the laws of the Province of British Columbia, Canada.

ARL
Albacore Research Ltd.

4196 Kashtan Place
Victoria, BC, Canada V8X 4L7
Toll Free: 1-888-210-7420
Phone: 1-250-479-3638
Fax: 1-250-479-0868
E-mail: sales@albacoreresearch.com
Web: www.albacoreresearch.com

August, 00

Contents

- Introduction** **1**
- Overview 1

- Installation** **3**
- Hardware and Software Requirements 3
- What is on this CD-ROM 3
- Running the ShipConstructor Installer 4
 - What to install 4
 - Software dependencies 4
 - Installing demo 4
 - Installing the purchased version 5
- Installing ShipConstructor99 6
 - ShipConstructor99 Options 6
 - Install ShipConstructor99 6
 - Updating, Repairing and Removing ShipConstructor99 10
- Install Microsoft Access 97 Runtime 10
- Product Presentation 10
- Product Documentation 11
- Installing ShipConstructor2000 13
 - ShipConstructor2000 Options 13
 - Install ShipConstructor2000 13
 - Updating, Repairing and Removing ShipConstructor2000 16
 - Install AutoNest Demo 17
 - Install Microsoft Access 2000 Runtime 17
 - Install Network Lock Server 17
 - Product Presentation 19
 - Product Documentation 19
- Installing the Hardware Lock (*licensed users only*) 20
- Technical Support 20

Introduction

Overview

ShipConstructor99 versus ShipConstructor2000

ShipConstructor99 products are designed to run with AutoCAD R14 and MSAccess97, while the ShipConstructor2000 suite is integrated with AutoCAD 2000 and MSAccess2000. Additionally ShipConstructor2000 contains many new features and advances not present in the 99 version. If you wish to just install one of the component programs (ShipCAM, CAD-Link, NC-Pyros) during the ShipConstructor install (99 or 2000) pick only the components you wish to install.

Installation

Hardware and Software Requirements

ShipConstructor is designed to run on PC computers with the following operating systems:

- Windows 95
- Windows 98
- Windows NT4
- Windows 2000

Your computer needs the following minimum configuration:

Requirements	NC-Pyros	ShipCAM	CAD-Link Lite, Design CAD-Link Pro detailing only	CAD-Link Pro advanced functions, interference checking, assembly drawings
Disk Space (MB)	5	25	50	150
RAM (MB)	32	Min 32, Rec. 128	Min. 32, Rec. 128	Min. 128, Rec. 256
CPU	Rec. Pentium	Rec. PII 266	Rec. PII 266	Rec. PII 400
Software	99 version optional MS Access 97 2000 version optional MS Access2000	99 version optional MS Access 97 2000 version optional MS Access2000	99 version requires AutoCAD R14 and MS Access 97, 2000 version requires AutoCAD2000 and MS Access2000	99 version requires AutoCAD R14 and MS Access 97, 2000 version requires AutoCAD2000 and MS Access2000

IMPORTANT: A hardware lock is required to run ShipConstructor products. Without the hardware lock all products will run in DEMO MODE (will only run with demo project).

What is on this CD-ROM

This CD-ROM features the latest products from ARL along with a slide show to give you an idea of what our software can do.

ShipConstructor99 and ShipConstructor2000 versions are included on the CD.

ShipCAM – Fairing and Lofting.

CAD-Link – Structural Modeling.

NC-Pyros	– NC code generation.
ShipReport	– MS Access Run-Time version required to run CAD-Link when you do not have MS Access97 for CAD-Link99 or MS Access2000 for CAD-Link2000.
Presentation	- ShipConstructor PowerPoint slide show.
Adobe Acrobat Reader 4.01	- Required to read and print the online manuals.
Microsoft Powerpoint2000 Viewer	– To view the PowerPoint Presentations if you do not have MS PowerPoint2000.

Running the ShipConstructor Installer

ARL's Installer allows you to install all the necessary ShipConstructor components, documentation and a PowerPoint presentation. To run the installer start **setup.exe** located on the CD-ROM.

Warning: After have installed the desired ShipConstructor components it maybe necessary to reboot the computer to complete the installation. The rebooting process may take a couple of minutes longer than usual as a number components must be configured before the install will be complete.

What to install

You can install ShipConstructor99 or ShipConstructor2000 or both. You can have both versions of the software installed on the same computer. ShipConstructor99 and ShipConstructor2000 differ in functionality and software compatibility. In general ShipConstructor2000 is newer and has more functions than the equivalent 99 versions.

The choice is yours. If you just want to check out the demos and can only run the 99 versions because you do not own AutoCAD2000, but have R14 for example; then install ShipConstructor99.

Software dependencies

MS Access - NC-Pyros, ShipCAM, and CAD-Link integrate with ShipReport. ShipReport runs inside of MS Access. ShipConstructor99 programs run in conjunction with MS Access97.

ShipConstructor2000 programs run with MS Access2000.

ShipCAM, CAD-Link and NC-Pyros do not require Access to run. You only need Access when you want to get data via ShipReport.

AutoCAD - CAD-Link99 runs inside of AutoCAD R14, while CAD-Link2000 runs inside of AutoCAD2000.

ShipCAM and NC-Pyros are independent of the version of your CAD system. They will work with any CAD system that can read and write DXF files.

Installing demo

It is probably not worth the expense of updating your versions of AutoCAD and/or MS Access just to run ShipConstructor in demo mode.

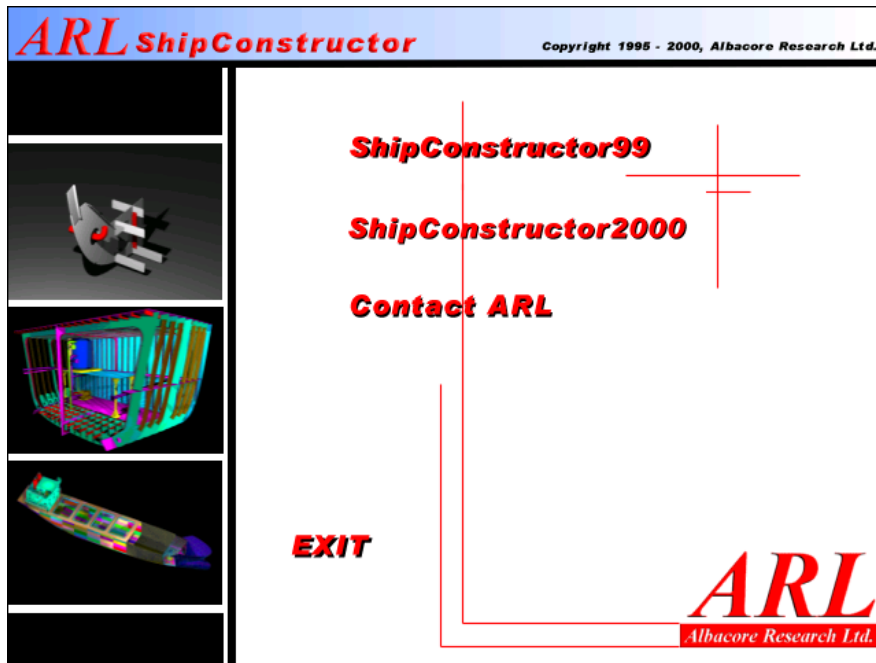
ShipCAM – If your only interest is ShipCAM, then you should install the 2000 version. It is not important which CAD version or MS Access version you have. However, you will want to make the final decision dependent on which CAD-Link you install.

CAD-Link – If you have AutoCAD R14 then you have to install the 99 version of CAD-Link and the other ShipConstructor components. If you have AutoCAD2000 then install the 2000 version, even if you only have MS Access97, install the MS Access 2000 runtime versions to enable ShipReport2000.

NC-Pyros – If your only interest is NC-Pyros, then you should install the 2000 version. It is not important which CAD version or MS Access version you have. However, you will want to make the final decision dependent on which CAD-Link you install.

Installing the purchased version

You can install either version of the software if you purchased the 2000 versions, You locks are programmed to run all our software versions up to 2000. Both versions will run with the same individual locks. However, the network lock only supports the 2000 version of ShipConstructor. You will require the 99 versions if you wish to have backward compatibility with older projects or to support customers with older software.



ShipConstructor99 - Goes to the 99-version installation page.

ShipConstructor2000 - Goes to the 2000-version installation page.

Contact ARL - Displays ARL's contact information.

Installing ShipConstructor99 Components

Select **ShipConstructor99** from the initial installation menu. Choose this option if you have MS Access97 and AutoCAD R14. You can also install the run-time version of MS Access97.



ShipConstructor99 Options

Install ShipConstructor99 – Installs ShipConstructor99 components.

Install Microsoft Access 97 Runtime – Installs the Microsoft Access97 Runtime components. You only need to install these components if you do not have MS Access 97. It will allow you to work with the ShipReport database, to view the data, modify data and print reports. Some advanced Access functions are not available with the run-time version. It is not required to run ShipCAM, CAD-Link or NC-Pyros.

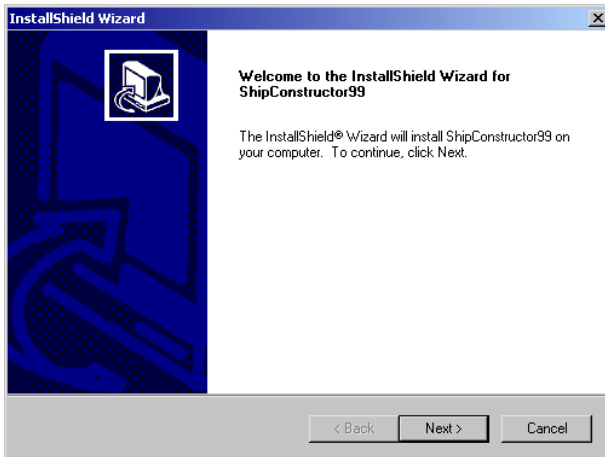
Product Presentation - PowerPoint97 Presentation

Product Documentation- Acrobat reader and .PDF versions of all the manuals.

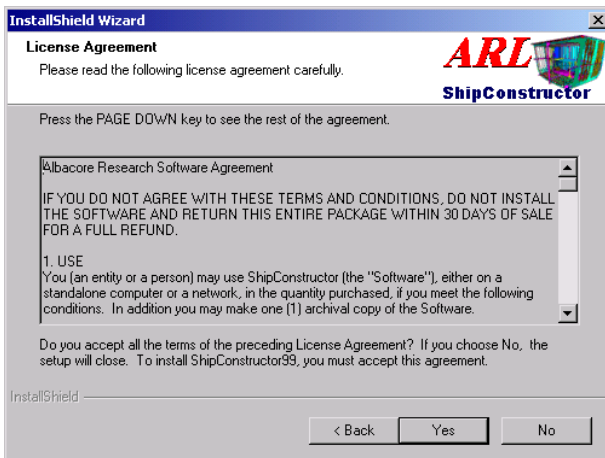
Install ShipConstructor99

Click on **Install ShipConstructor99** to begin the **ShipConstructor99** installation.

1. The **ShipConstructor99** setup startup screen shows the following window. To continue with the installation click on **Next**. To cancel the installation at any time click on **Cancel**.

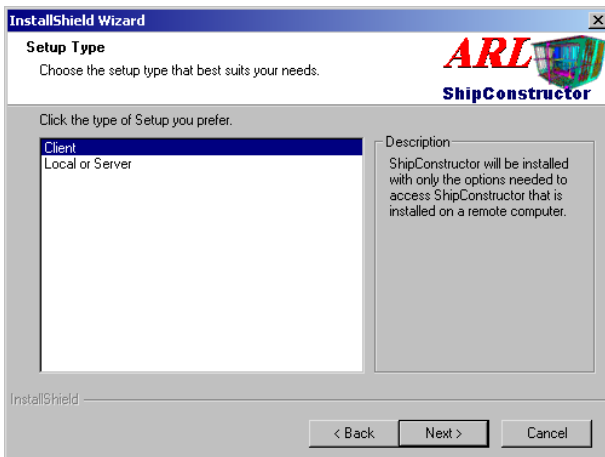


- The **ShipConstructor99** setup startup screen shows the following window, which displays the License agreement. Please read the agreement carefully before clicking on **Next** to continue.

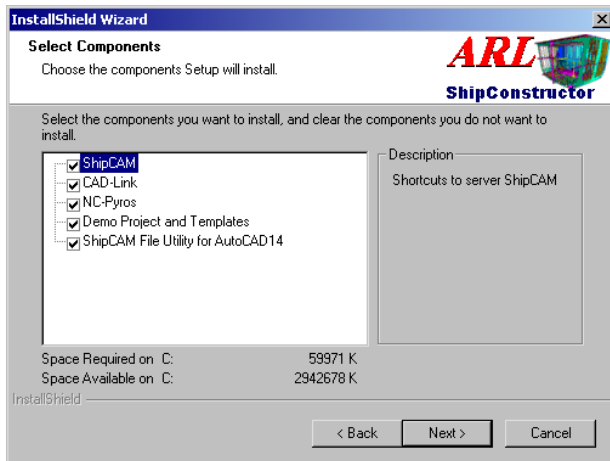


- The next screen allows you to select from 2 options.
 - Client** installation – installs the necessary components on the current workstation for **ShipConstructor99** to be run from a server. This type of installation must be run only **after ShipConstructor99** is installed on the server.
 - Local or Server** installation – installs the entire **ShipConstructor99** programs and demo project. Use this option if you are installing **ShipConstructor99** for the first time. Use this type of installation if you intend to run **ShipConstructor99** in a network environment or a single-user environment.

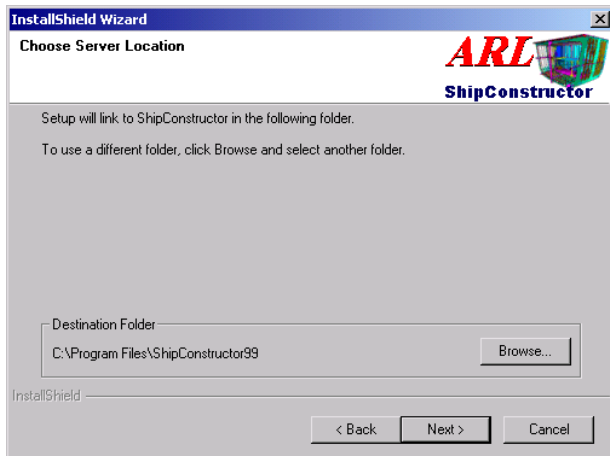
Choose one of the options, and then click **Next** to continue.



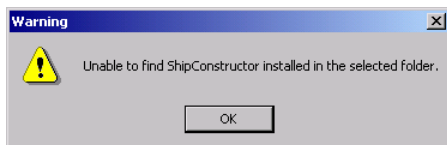
4. Select the components you wish to install. When you have finished selecting your options click on **Next**.



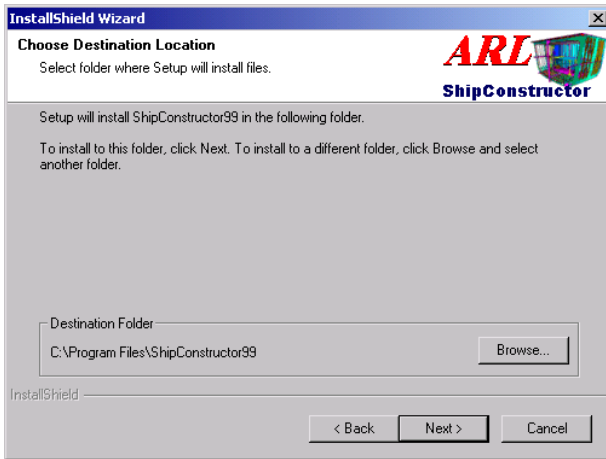
5. If you are installing the **Client** version of **ShipConstructor99** the install program will ask you to locate the ShipConstructor99 install folder on the server. Once you have located the folder click on **Next** to continue.



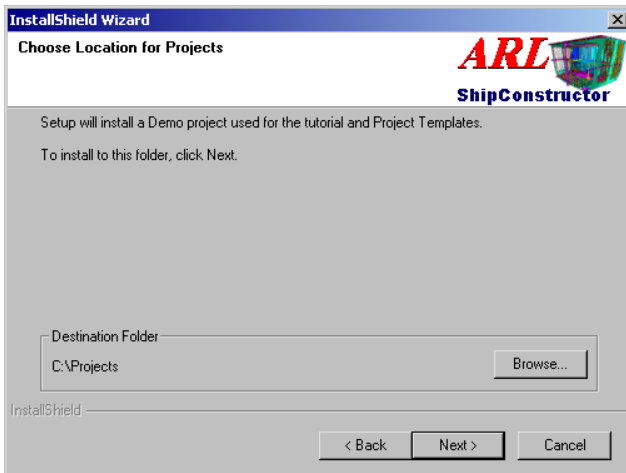
6. If the following message dialog appears then the install program is unable to find a valid installation of ShipConstructor in the selected folder. This maybe because the wrong folder was selected, or the ShipConstructor installed on the server was incomplete, or the internal folders were renamed. In the last two cases the server version must be reinstalled.



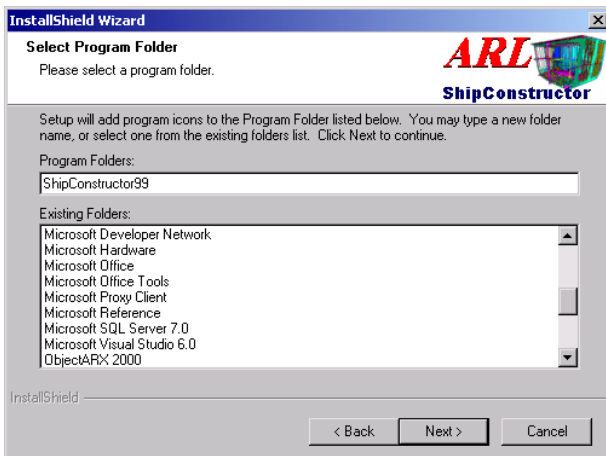
7. For the **Server** installation you will be required to enter the destination folder. Once you have entered a suitable destination click on **Next** to continue.



- Next the install program will ask you to choose a location to install the demo and template projects. Once you have located the folder click on **Next** to continue.



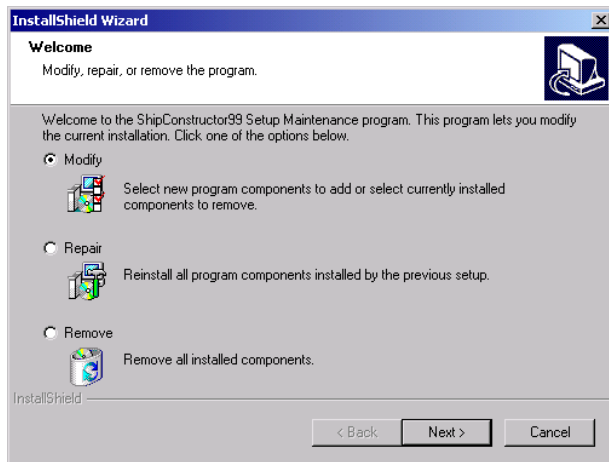
- Next you are given the option of selecting a program folder where the ShipConstructor shortcuts will be placed on the Start menu. Click **Next** when you have selected a folder name.



- This completes the options and the install process will run.

Updating, Repairing and Removing ShipConstructor99

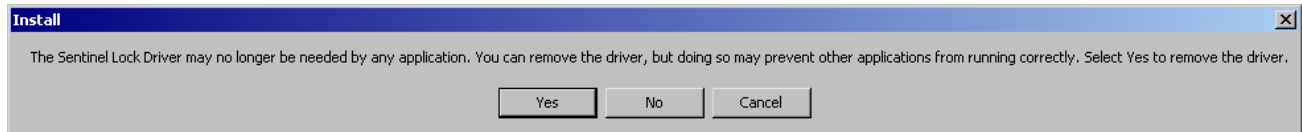
Once **ShipConstructor99** is installed it can be updated, repaired or removed by launching the **ShipConstructor99** install again.



Modify-Change which components of ShipConstructor you have installed.

Repair- Reinstall your ShipConstructor components.

Remove- Uninstall all ShipConstructor components. If you choose remove you will be asked if you wish to remove all components, after clicking on **OK**, the following dialog will be displayed.



Removing the lock driver may cause other applications including other versions of **ShipConstructor** to stop working correctly. If you wish to remove click **Yes**, click **No** if you wish to leave the driver but continue with the uninstall and finally click **Cancel** to abort the uninstall.

Install Microsoft Access 97 Runtime

ShipConstructor99 uses an Access 97 Database for ShipReport99. If you do not have Access97 installed you may wish to install the runtime version of Access97 which will allow you to use the ShipReport99 interface. This will enable you to view the data in the project databases and to view and print reports. It is not required to install the runtime version for NC-Pyros or ShipCAM. The runtime version always has to be installed on the local computer, not on the server. To install click on **Install Microsoft Access 97 Runtime**.

Product Presentation

At the bottom of the **ShipConstructor99** install screen on the left is a button, which will open the **Product Presentation** screen.



If you don't have PowerPoint installed on your computer you can click on the **Install Viewer** button to install a viewing only version of PowerPoint. To view the presentation demonstrating many of the features of **ShipConstructor99** click on **View Presentation**.

Product Documentation

Clicking on the **Product Documentation** button on the **ShipConstructor99** install screen will bring up the **Documentation** screen seen below.



If you don't have Acrobat Reader 4.01 or later from Adobe installed you can install version 4.01 by clicking on the **Acrobat Reader** button to the left. **CAD-Link99**, **ShipCAM99** and **NC-Pyros99** manuals can be viewed in .PDF format by clicking on the appropriate button.

Installing ShipConstructor2000 Components

Select **ShipConstructor2000** from the initial installation menu.

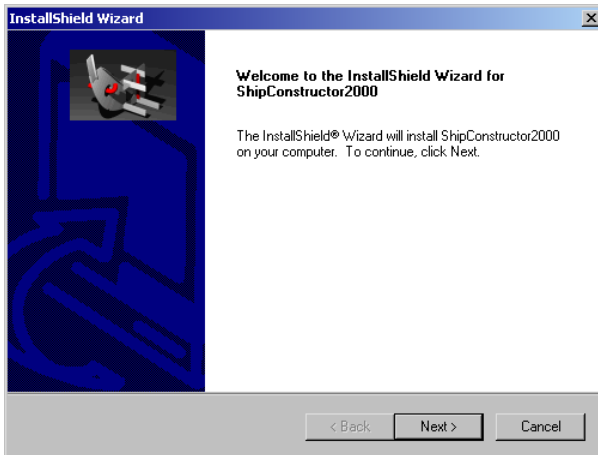


ShipConstructor2000 Options

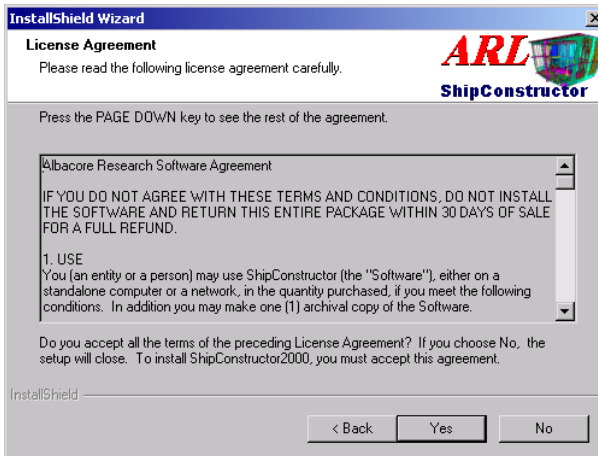
<i>Install ShipConstructor2000</i>	- Installs ShipConstructor2000 or any of its components.
<i>Install AutoNest Demo</i>	- Installs the AutoNest Demo.
<i>Install Microsoft Access 2000 Runtime</i>	- Installs the Microsoft Access 2000 runtime files. Use this option if you do not have MS Access 2000 on your computer.
<i>Install Network Lock Server</i>	- Installs the Network Lock Server, it only needs to be installed on the machine that will have the network lock attached.
<i>Product Presentation</i>	- PowerPoint2000 Presentation (PowerPoint viewer can be installed if PowerPoint is not installed)
<i>Product Documentation</i>	- Acrobat reader and .PDF versions of all the manuals.

Install ShipConstructor2000

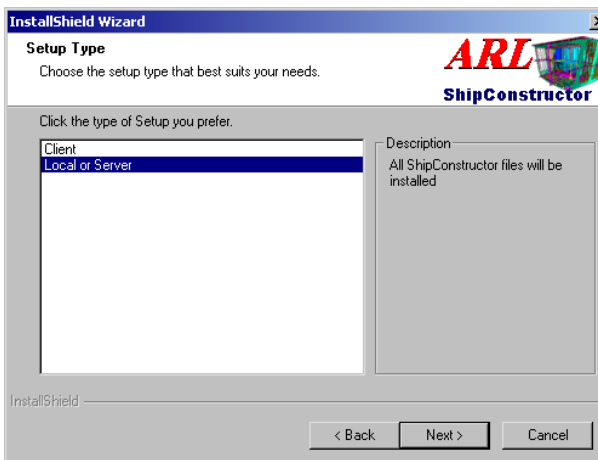
1. Click on **Install ShipConstructor2000** to begin the ShipConstructor2000 installation.
2. The **ShipConstructor2000** startup screen shows the following window. To continue with the installation click on **Next**. To cancel the installation at any time click on **Cancel**.



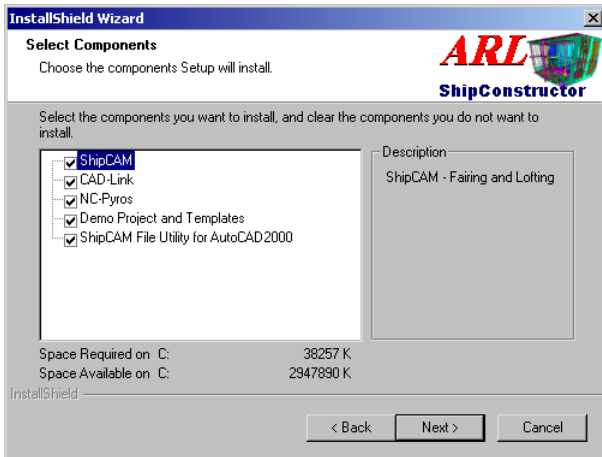
3. The **ShipConstructor2000** setup startup screen shows the following window which displays the License agreement. Please read the agreement carefully before clicking on **Next** to continue.



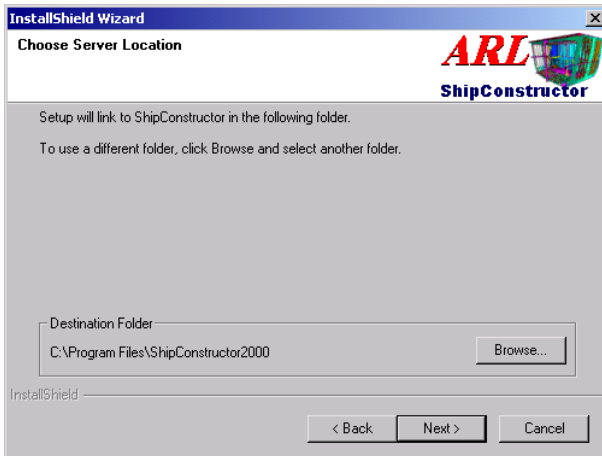
4. **Client** installation – installs the necessary components on the current workstation for **ShipConstructor2000** to be run from a server. This type of installation must be run only after **ShipConstructor2000** is installed on the server.
5. **Server or Stand-alone** installation – installs the entire **ShipConstructor2000** programs and demo project. Use this option if you are installing **ShipConstructor2000** for the first time. Use this type of installation if you intend to run **ShipConstructor2000** in a network environment or a single-user environment.



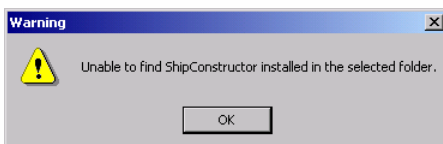
6. Next choose which components of **ShipConstructor2000** to install. When you have finished choosing your options click on **Next**.



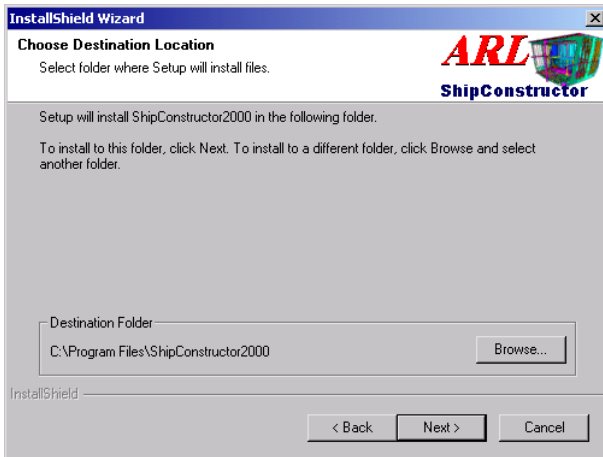
- If you are installing the **Client** version of **ShipConstructor2000** the install program will ask you to locate the ShipConstructor2000 installation on the server. Once you have located the folder click on **Next** to continue.



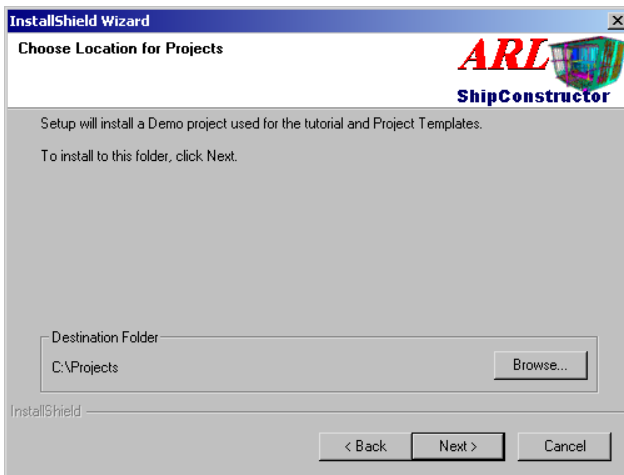
- If the following message dialog appears then the install program is unable to find a valid installation of ShipConstructor in the selected folder. This maybe because the wrong folder was selected, or the ShipConstructor installed on the server was incomplete, or the internal folders were renamed. In the last two cases the sever version must be reinstalled.



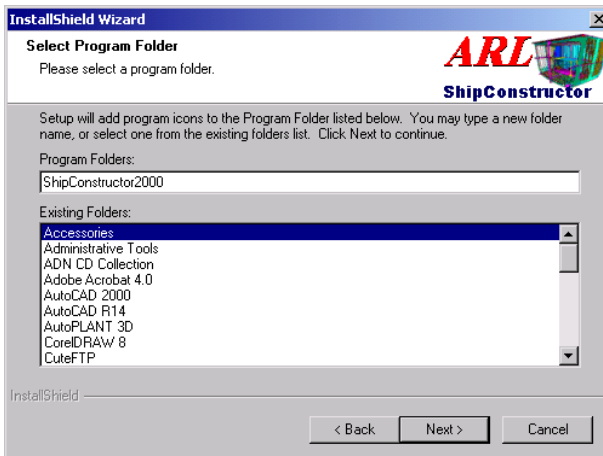
- For the **Server** installation you will be required to enter the destination folder. Once you have entered a suitable destination click on **Next** to continue.



10. Next the install program will ask you to choose a location to install the demo and template projects. Once you have located the folder click on **Next** to continue.

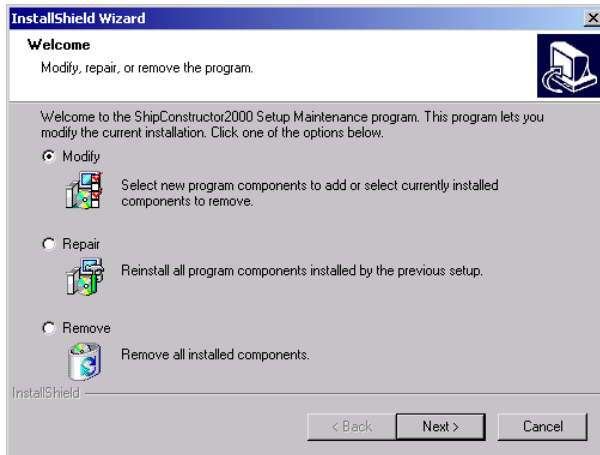


11. Next you are given the option of selecting a program folder where the ShipConstructor shortcuts will be placed on the Start menu. Click **Next** when you have selected a folder name and the installation will begin.



Updating, Repairing and Removing ShipConstructor2000

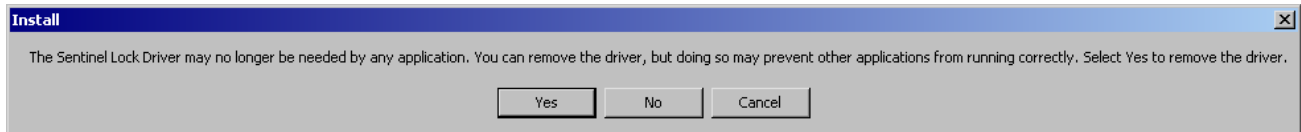
Once **ShipConstructor2000** is installed it can be updated, repaired or removed by launching the ShipConstructor2000 install again.



Modify- Change which components of ShipConstructor you have installed.

Repair- Reinstall your ShipConstructor components.

Remove- Uninstall all ShipConstructor components. If you choose remove you will be asked if you wish to remove all components, after clicking on **OK**, the following dialog will be displayed.



Removing the lock driver may cause other applications including other versions of **ShipConstructor** to stop working correctly. If you wish to remove click **Yes**, click **No** if you wish to leave the driver but continue with the uninstall and finally click **Cancel** to abort the uninstall.

Install AutoNest Demo

From the **ShipConstructor2000** install screen select **Install AutoNest Demo**, which will launch the installer for AutoNest from Radan Systems. AutoNest is an automatic nesting program that can be used through CAD-Link to automatically nest previously generated parts. This will allow you to try the AutoNest software with the demo Project. Please contact ARL if you are interested in purchasing a copy of AutoNest for use with ShipConstructor.

Install Microsoft Access 2000 Runtime

ShipConstructor uses an Access 2000 Database to manage the ship production process. If you don't have Access 2000 installed you will need to install the runtime version of Access 2000 which will allow you to use the ShipReport interface to the Database. To install click on **Install Microsoft Access 2000 Runtime**.

Install Network Lock Server

If ShipConstructor2000 will be running off of a network lock then the machine which will have the network lock attached to it needs to install the Network Lock Server. From the **ShipConstructor2000** install screen select **Install Network Lock Server**, and follow the onscreen instructions regarding choosing the location of the server and where to place the **Start** menu. Before finishing, the last screen will ask you if you wish to start the Network Server. The Network Server must be running at all times in order for client machines to be running ShipConstructor2000 using the network lock.

Product Presentation

At the bottom of the **ShipConstructor2000** install screen on the left is a button, which will open the **Product Presentation** screen.

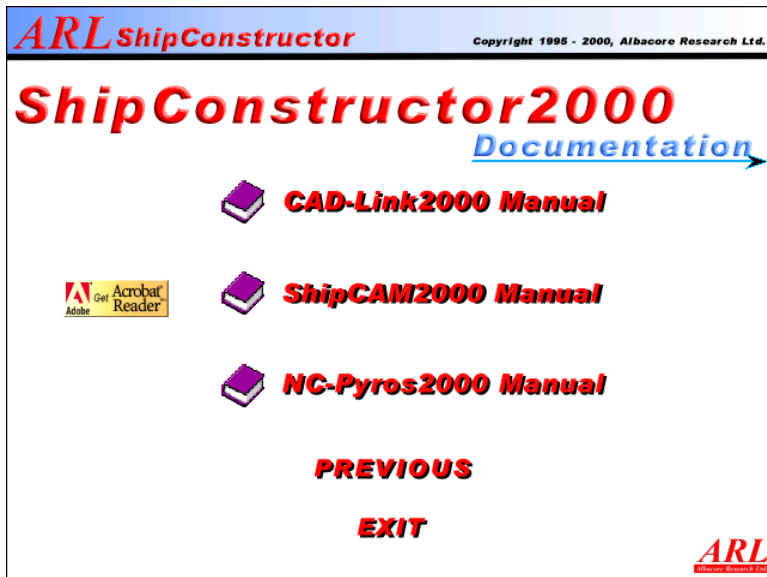


If you do not have PowerPoint installed on your computer you can click on the **Install Viewer** button to install a viewing only version of PowerPoint.

To view the presentation demonstrating many of the features of **ShipConstructor2000** click on **View Presentation**.

Product Documentation

Clicking on the **Product Documentation** button on the **ShipConstructor2000** install screen will bring up the **Documentation** screen seen below.



If you don't have Acrobat Reader from Adobe installed you can install version 4.01 by clicking on the **Acrobat Reader** button to the left. **CAD-Link2000**, **ShipCAM2000** and **NC-Pyros2000** manuals can be viewed in .PDF format by clicking on the appropriate button.

Installing the Hardware Lock *(licensed users only)*

A hardware lock is shipped with the licensed software to operate the program. Without the hardware lock the program will run in demo mode.

The hardware lock plugs into the parallel port of your computer. The lock is a pass-through device, which allows you to keep other devices connected to the parallel port (printers, etc.). Attach the end of the lock labeled **↑COMPUTER↑** to a parallel port. Tighten the screws to connect the lock securely to the port.

If you have multiple locks connected to the same parallel port, make sure this lock is the last lock in the chain (farthest from your computer).

Turn ON all devices that are connected to the lock. A device connected to the parallel port that is switched OFF prevents the proper operation of the hardware lock.

Information on DAO and Microsoft Data Access (MDAC) Components

ShipConstructor requires specific support components from Microsoft to run. The installation program automatically detects if up-to-date components are already on your system. The correct ones will be automatically installed if they are not present.

For ShipConstructor99 Office97 support components are required. These are the core DAO v3 and v3.5 components.

For ShipConstructor2000 Office2000 support components are required. These are the MDAC v2.5 consisting of ODBC, ADO and the Microsoft Jet engine v4.0.

For ODBC, the MDAC installation program installs and configures the base 32-bit ODBC administrator v3.0.

If you are running applications that use the earlier versions of these components, problems may occur due to the upgraded drivers. If problems occur, contact the vendor of the incompatible software to obtain versions compatible with the MDAC.

Technical Support

Albacore Research Ltd. offers all customers technical support for the first 3 months after purchase. Additional support can be obtained through our maintenance and support program. In some cases our staff will offer to check out the problem with your data file. In this case it is advisable to compress the data file, for example with WinZip, and e-mail it to us. We will investigate the problem and forward a solution to you.

Office hours: 8:30 am – 5:00 pm Pacific Time
Toll-free: 1-888-210-7420
Phone: 1-250-479-3638
Fax: 1-250-479-0868
E-mail: support@albacorerresearch.com
Web: www.albacorerresearch.com