
ShipConstructor

Installation Guide

By Albacore Research Ltd.

Albacore Research Ltd. License Agreement

This is a legal agreement between the end-user and Albacore Research Ltd. By opening this package the user agrees to be bound by the terms of this agreement. If the user does not agree to the terms he should promptly return this package including all accompanying items to the place where it was obtained for a full refund.

1. Grant of License: The licensee receives a license for unlimited use on a single user system.

2. Copyright: The program remains the exclusive property of Albacore Research Ltd. and is protected by copyright laws. You may make copies of the software for back-up purposes or for transfer to hard disks, provided that one copy is only used at any time. You may not copy the written material accompanying the software.

3. Limited Warranty: Albacore Research Ltd. warrants that the software will perform substantially in accordance with the accompanying written materials for a period of 90 days from date of receipt. In some countries the warranty period may be different.

ALTHOUGH THE SOFTWARE HAS BEEN TESTED AND THE DOCUMENTATION HAS BEEN REVIEWED, ALBACORE RESEARCH LTD. MAKES NO WARRANTY EXPRESSED OR IMPLIED, WITH RESPECT TO THIS SOFTWARE, ITS QUALITY, PERFORMANCE, OR FITNESS FOR A PARTICULAR PURPOSE. THIS SOFTWARE IS SOLD "AS IS" AND YOU, THE PURCHASER, ARE ASSUMING THE ENTIRE RISK AS TO ITS QUALITY AND PERFORMANCE.

IN NO EVENT WILL ALBACORE RESEARCH LTD. BE LIABLE FOR ANY DAMAGES WHATSOEVER (INCLUDING, WITHOUT LIMITATION, DAMAGES FOR LOSS OF BUSINESS PROFITS, BUSINESS INTERRUPTION, LOSS OF BUSINESS INFORMATION OR OTHER PECUNIARY LOSS, DAMAGES TO EQUIPMENT, MATERIAL AND PERSONS) ARISING OUT OF THE USE OR INABILITY TO USE THIS SOFTWARE PRODUCT.

THE WARRANTY SET ABOVE IS IN LIEU OF ALL OTHERS, ORAL OR WRITTEN, EXPRESSED OR IMPLIED.

October 01

ShipConstructor Team

Rolf Oetter
Doug Dark
Jason Paterson
Chris Phillips
Darren Larkins
Walter Langer
Eric Heemskerck
Silke Sommerfeld
Christian Zuger
Adam Chernenkoff
Terry Fiddler
Lorne Trudeau
Barinder Basi
David Claus
Lyndon Crossman
James DeGreef
Brian Oraas
Shawn Stapleton
Sue Stevens
Kevin Van Donkersgoed
Vlad Vukomanovic
Mike Werner



4196 Kashtan Place
Victoria, BC
Canada V8X 4L7

Toll Free: 1-888-210-7420
Phone: 1-250-479-3638
Fax: 1-250-479-0868

info@ShipConstructor.com
support@ShipConstructor.com
sales@ShipConstructor.com
www.ShipConstructor.com

Contents

- Introduction** **1**
 - Overview 1
 - ShipConstructor2000..... 1
 - ShipConstructor2001..... 1
 - Database Issues with ShipConstructor2000 2
 - Database Issues with ShipConstructor2001 2

- Installation** **3**
 - Hardware and Software Requirements 3
 - What is on this CD-ROM..... 4
 - Running the ShipConstructor Installer 4
 - What to install 4
 - Software dependencies 4
 - Installing the demo 4
 - Installing the purchased version..... 5
 - Recommended 2001 Network Installations 5
 - Setup Method 1 5
 - Setup Method 2 6
 - Installing ShipConstructor2001 Components 7
 - ShipConstructor2001 Options..... 7
 - Install ShipConstructor2001 7
 - Updating, Repairing and Removing ShipConstructor2001..... 11
 - Install AutoNest Demo 11
 - Install Lock Drivers 11
 - Product Presentation 11
 - Product Documentation 12
 - Installing ShipConstructor2000 Components 12
 - ShipConstructor2000 Options..... 12
 - Install ShipConstructor2000 13
 - Updating, Repairing and Removing ShipConstructor2000..... 16
 - Install AutoNest Demo 16
 - Install Microsoft Access 2000 Runtime 17
 - Install Lock Drivers 17
 - Product Presentation 17
 - Product Documentation 17
 - Installing the Hardware Lock (*licensed users only*) 18
 - Information on DAO and Microsoft Data Access (MDAC) Components 18
 - Technical Support 19

Introduction

Overview

This CD contains two versions of ShipConstructor – namely **ShipConstructor2000** and **ShipConstructor2001**. Which one is the right version of ShipConstructor for your company and for your project?

ShipCAM and NC-Pyros 2000 and 2001 versions are almost identical, except the newer versions support MS SQL Server while the 2000 versions support MS Access. However, new functionality will only be added to the 2001 versions of both programs. This shift from MS Access to MS SQL Server will allow for considerable performance benefits for the 2001 versions, particularly on larger projects.

The main differences between the 2000 and 2001 versions are in the modules of ShipConstructor running inside of AutoCAD and in the database interfaces. For ShipConstructor2000 these are CAD-Link and ShipReport, while for ShipConstructor2001 these are Structure, Outfit, Pipe and Manager.

Both products require AutoCAD 2000, 2000i or 2002.

ShipConstructor2000

ShipConstructor2000 products are designed to run with MSAccess2000. ShipConstructor2000 comes with a run-time license of Microsoft Access, should you not have it already and do not want to purchase it. The only disadvantages being, that you cannot modify any of the table values directly, and you cannot compact the database, which will become necessary when working on larger projects (more than 5000 parts). Use ShipConstructor2000 if:

- You do not require piping.
- You have low end computers (see next page) or want to avoid Microsoft SQL Server, which is slightly more complex to install and use than Microsoft Access.
- Your projects do not exceed 5000 parts with 5 or less people working on the projects simultaneously.

ShipConstructor2001

ShipConstructor2001 is integrated with Microsoft SQL Server 2000, making it much more powerful specifically for larger projects. ShipConstructor2001 also contains many new features not found in ShipConstructor2000. Use ShipConstructor2001 if:

- You require piping.
- You have a medium to high end computer (see next page).
- You do not shy away from MS SQL Server (we have gone to great length providing tools to simplify this process).

- You have large projects in excess of 5000 parts with more than 5 people working on the project simultaneously.

Database Issues with ShipConstructor2000

ShipConstructor2000 uses MS Access2000 as the central database engine. The installation allows you to install a runtime version of MS Access giving you all the access to the ShipConstructor database data. However, you do not have access to the MS Access functions that allow you to inspect tables, queries and reports directly, or let you compact the database on a regular basis. For these reasons we recommend that you purchase MS Access2000 if you work on projects larger than 2000 parts.

Database Issues with ShipConstructor2001

ShipConstructor2001 uses MS SQL Server as the central database engine. The installation allows you to install a free licensed version of SQL Server called the SQL Server Desktop Engine if you do not already have SQL Server. The Desktop Engine is optimized for up to five simultaneous users. Manager provides all required functions to backup, restore and manage your project databases. We recommend that you purchase a full SQL Server license if you work on projects larger than 8000 parts.

Installation

Hardware and Software Requirements

ShipConstructor is designed to run on PC computers with the following operating systems:

- Windows 98/ME
- Windows NT4
- Windows 2000

Your computer needs the following configuration:

ShipConstructor 2000 Requirements

	NC-Pyros	ShipCAM	CAD-Link Lite, Design, CAD-Link Pro detailing only
Disk Space (MB)	5	25	150
RAM (MB)	32	Min 32, Rec. 128	Min. 128, Rec. 256
CPU	Rec. Pentium	Rec. PII 266	Rec. PII / PIII 400 or similar
Software	None	None	AutoCAD2000, Rec. MS Access2000

ShipConstructor 2001 Requirements

	NC-Pyros	ShipCAM	Structure, Outfitting, Piping Client / Server
Disk Space (MB)	5	25	196 / 450
RAM (MB)	32	Min 32, Rec. 128	Min. 128, Rec. 512
CPU	Rec. Pentium	Rec. PII 266	Rec. PII 400 / PIII 600
Software	None	None	AutoCAD2000, 2000i or 2002, Rec. MS SQL Server2000

IMPORTANT: A hardware lock is required to run ShipConstructor products. Without the hardware lock all products will run in DEMO MODE (will only run with demo project).

What is on this CD-ROM

This CD-ROM features the latest products from ARL along with a slide show to give you an idea of what our software can do.

ShipConstructor2000 and ShipConstructor2001 versions are included on the CD.

Presentation	- ShipConstructor PowerPoint slide show.
Adobe Acrobat Reader 4.01	- Required to read and print the online manuals.
Microsoft Powerpoint2000 Viewer	- Required to view the PowerPoint Presentations if you do not have MS PowerPoint2000.

Running the ShipConstructor Installer

ARL's Installer allows you to install all the necessary ShipConstructor components, documentation and a PowerPoint presentation. To run the installer start **setup.exe** located on the CD-ROM.

Warning: After having installed the desired ShipConstructor components it may be necessary to reboot the computer to complete the installation. The rebooting process may take a couple minutes longer than usual as a number of components must be configured before the install will be complete.

What to install

You can install ShipConstructor2000 or ShipConstructor2001 or both. You can have both versions of the software installed on the same computer. ShipConstructor2000 and ShipConstructor2001 differ in functionality and software compatibility. In general, ShipConstructor2001 is newer and has more functions than the equivalent 2000 versions. All versions of the products within ShipConstructor require the installation of lock software that allows programs to acquire licenses from the hardware locks that are included with a purchased suite of ARL software.

Software dependencies

MS Access - NC-Pyros, ShipCAM, and CAD-Link 2000 integrate with ShipReport. ShipReport runs inside MS Access. With ShipConstructor2000, ShipCAM, CAD-Link and NC-Pyros do not require Access to run on the client computers. You only need Access when you want to get data via ShipReport. The 2001 versions of these products do not require or use MS Access.

SQL Server - All 2001 products require at least a single machine running SQL Server; this does not have to be the "server" in your company's network. A free licensed version of SQL Server (Microsoft Desktop Engine) is packaged with ShipConstructor2001. It is recommended that all of the project databases be kept on the same project server to make administration tasks easier. For larger projects it may be in your best interest to purchase a full version of SQL Server as it is vastly superior in terms of performance and scalability.

AutoCAD - CAD-Link2000 and ShipConstructor2001 run inside of AutoCAD2000, 2000i or 2002. ShipCAM and NC-Pyros are independent of the version of your CAD system. They will work with any CAD system that can read and write DXF files.

Installing the demo

It is probably not worth the expense of updating your versions of AutoCAD and/or MS Access just to run ShipConstructor in demo mode.

ShipCAM - If your only interest is ShipCAM, then you should install the 2001 version. It is not important which CAD version or MS Access version you have. However, you will want to make the final decision dependent on which CAD-Link / ShipConstructor you install.

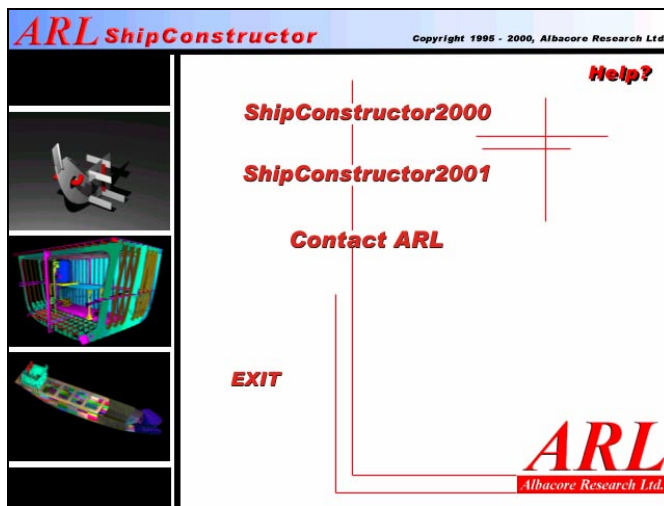
NC-Pyros - If your only interest is NC-Pyros, then you should install the 2001 version. It is not important which CAD version or MS Access version you have. However, you will want to make the final decision dependent on which CAD-Link / ShipConstructor you install.

CAD-Link2000 - You require AutoCAD2000, 200i, or 2002. The MS Access runtime version is more than adequate to run the demos should you not own a copy of MS Access2000.

Structure2001, Outfit2001, Pipe2001 - You require AutoCAD2000, 200i, or 2002. The SQL Server Desktop Engine version is more than adequate to run the demos should you not own a copy of SQL Server2000.

Installing the purchased version

Both versions will run with the same individual and network locks. You will require the 2000 versions if you wish to have backward compatibility with older projects or to support customers with older software. While ShipConstructor2000 projects can be upgraded to 2001, they will no longer be usable by 2000 versions of the software.



ShipConstructor2000 - Goes to the 2000-version installation page.

ShipConstructor2001 - Goes to the 2001-version installation page.

Contact ARL - Displays ARL's contact information.

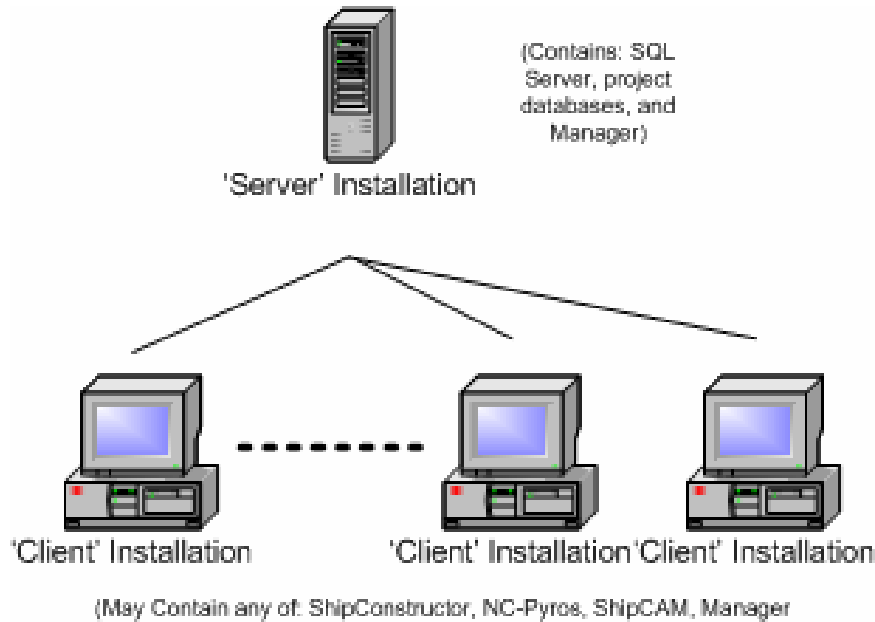
Recommended 2001 Network Installations

All ShipConstructor2001 network installations will follow a basic client-server architecture. One machine acts as a project server and houses the data for each of the current projects. The workstations on the network access the projects on the server directly. There are two main ways to install ShipConstructor2001 in a network environment.

Setup Method 1

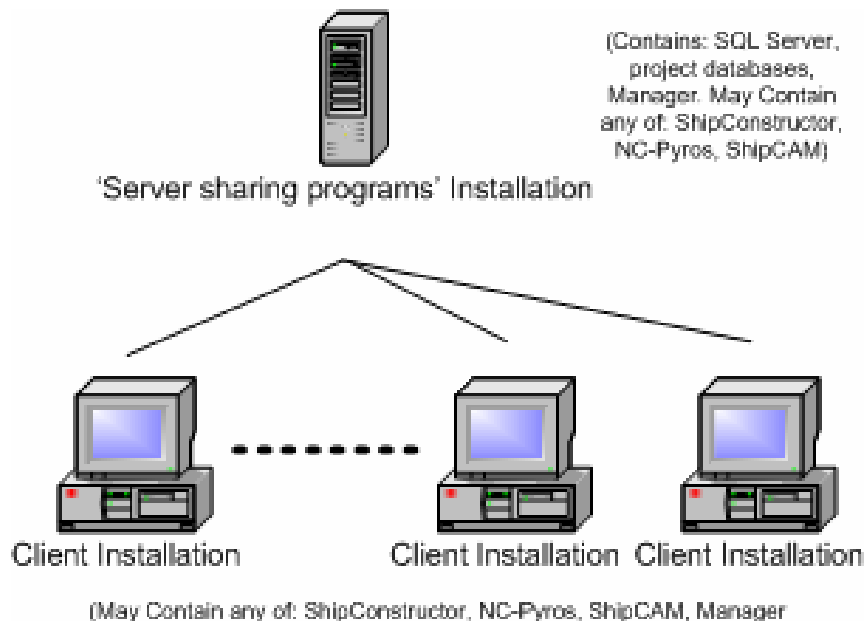
The first method of installation involves installing the server using the "Server" installation type for the project server and the "Client" installation type for each of the workstations. This will not install any of the application software (such as ShipConstructor, NC-Pyros or ShipCAM) on the server. The client machines will have a separate installation of each application. This is perhaps the most flexible installation type as changes to the server such as location and network drive mappings will not affect the clients. It also allows the project server to be replaced without any work necessary on the client machines and can make it easier to work with multiple project servers. It can be more difficult to maintain than the

next option due to the fact that an update to ShipConstructor must be performed on each of the clients. The diagram below outlines the structure of the first option.



Setup Method 2

The second method of installation involves installing the server using the “Server sharing programs” installation type for the project server and the “Client using Server program location” installation type for each of the workstations. This will not install any of the application software (such as ShipConstructor, NC-Pyros or ShipCAM) on the workstations. The server machine will have a complete installation of each application. The server’s program files will be used by each of the client computers. This setup type is easier to update than the first option because updates to ShipConstructor only have to be performed on a single machine. However if anything is changed on the server machine and the clients are no longer able to see the location in which the program files have been installed, they will no longer be able to run ShipConstructor. This installation type is also less flexible when it comes to changing project servers or adding multiple project servers. The diagram below outlines the structure of the second option.



Installing ShipConstructor2001 Components

Select **ShipConstructor2001** from the initial installation menu. This option requires AutoCAD 2000, 2000i or 2002. The 2001 version contains many improvements over the 2000 versions in the areas of functionality, speed, and stability.



ShipConstructor2001 Options

Install ShipConstructor2001 - Installs ShipConstructor2001 components.

Install AutoNest Demo - Installs the demo version of the AutoNest software that is packaged with ShipConstructor2001.

Install Lock Drivers - Installs the Lock Drivers. Needs to be installed on all machines that will run ShipConstructor.

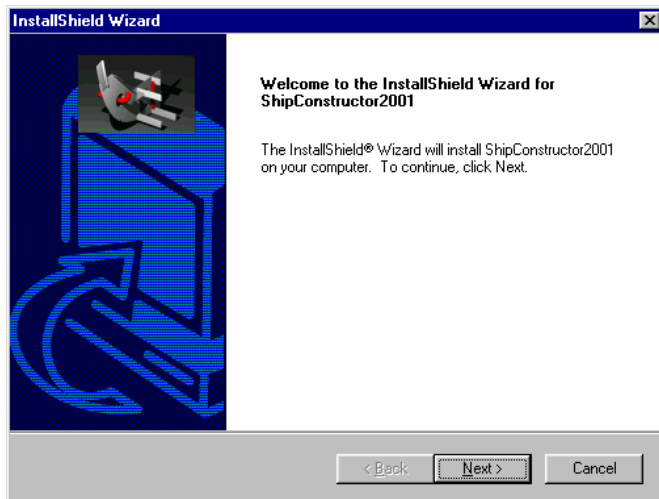
Product Presentation - 2001 PowerPoint presentation.

Product Documentation - Contains Acrobat Reader and .PDF versions of all the manuals.

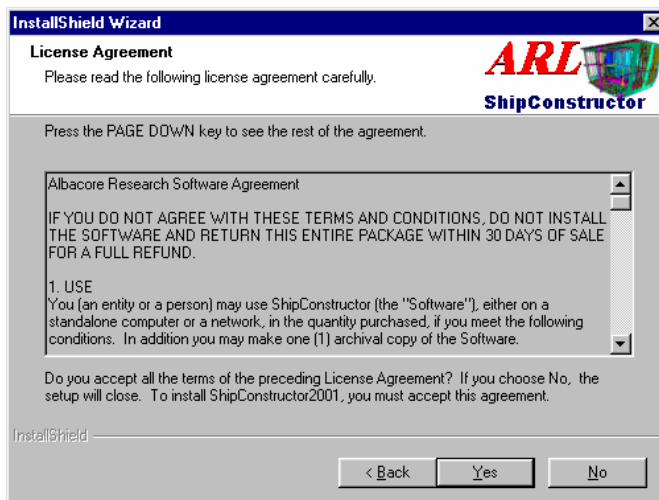
Install ShipConstructor2001

Click on **Install ShipConstructor2001** to begin the **ShipConstructor2001** installation.

1. The **ShipConstructor2001** setup startup screen shows the following window. To continue with the installation click on **Next**. To cancel the installation at any time click on **Cancel**.

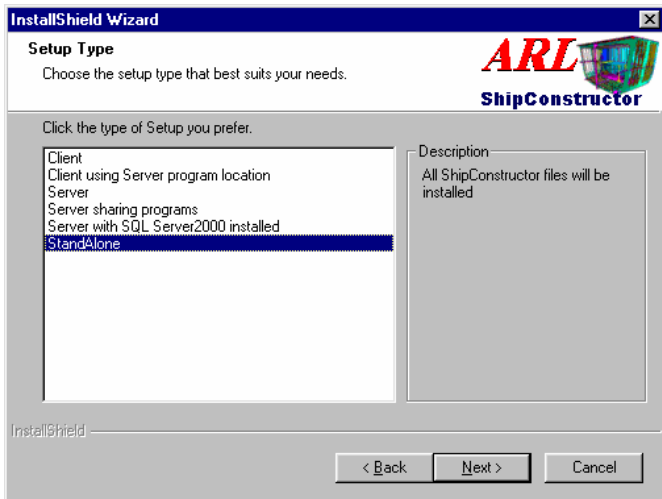


- The **ShipConstructor2001** setup startup screen shows the following window, which displays the License Agreement. Please read the agreement carefully before clicking on **Next** to continue.

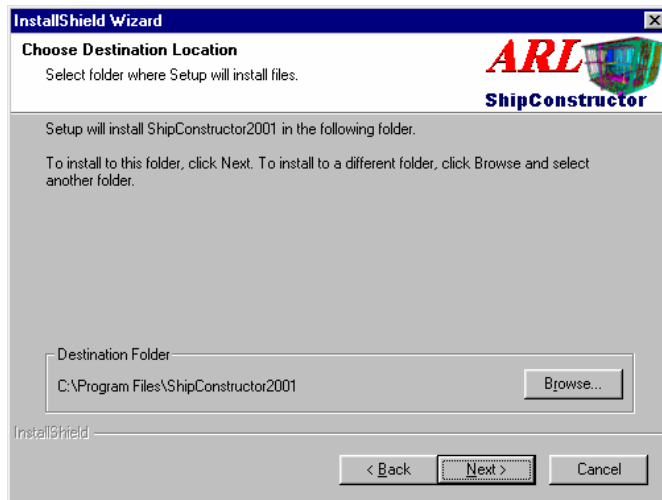


- The next screen allows you to select from several options.
 - Client** - Installs the necessary components on the current workstation for **ShipConstructor2001** to be run from a server. This type of installation must be run only after **ShipConstructor2001** is installed on the server.
 - Client using Server program location** - Similar to the **Client** installation except the main program file components exist on a machine that has been installed using the **Server sharing programs** option below.
 - Server** - Creates a project server including Manager, the demo project and the SQL Server 2000 Desktop Engine.
 - Server sharing programs** - Installs the entire **ShipConstructor2001** suite, the demo project, and the SQL Server 2000 Desktop Engine. Use this type of installation if you intend to run **ShipConstructor2001** in a network environment and you do not wish the clients to have separate versions of the major program files.
 - Server with SQL Server 2000 installed** - This option is similar to the **Server** option above with the exception that it does not install the SQL Server 2000 Desktop Engine. The existing SQL Server installation will be used for the project databases.
 - Standalone** - Installs the entire **ShipConstructor2001** suite, the demo project and the SQL Server 2000 Desktop Engine. Use this type of installation if you intend to run **ShipConstructor2001** with a single computer.

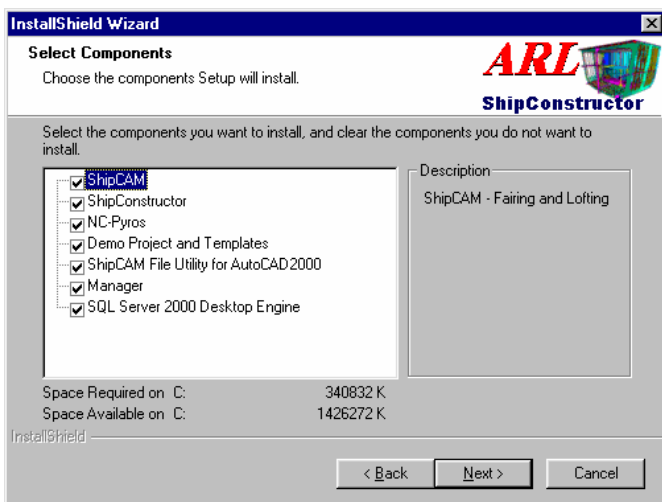
Choose one of the options, and then click **Next** to continue.



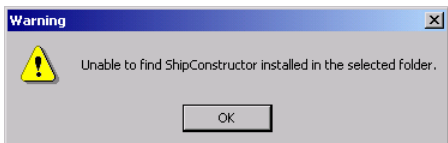
4. Select the location for the project files in this installation



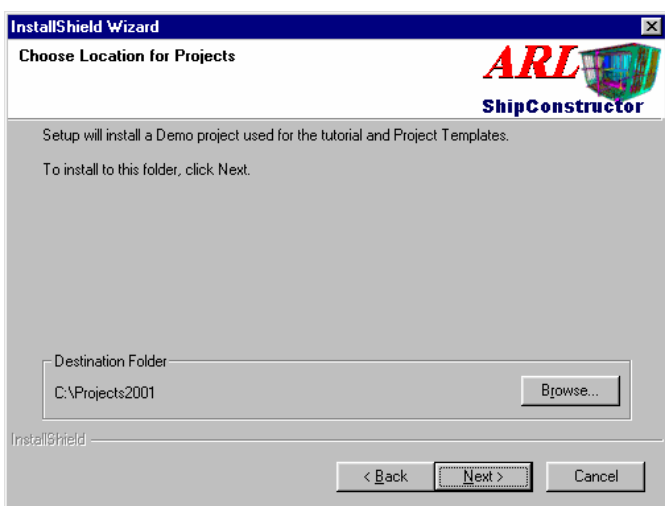
5. Select the components you wish to install. When you have finished selecting your options click on **Next**.



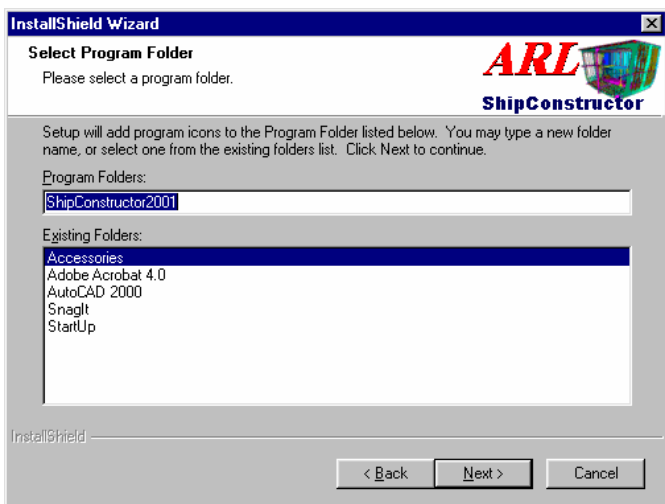
- If you are installing the **Client using server program location** version of **ShipConstructor2001** the install program will ask you to locate the ShipConstructor2001 install folder on the server. Once you have located the folder click on **Next** to continue.
- If the following message dialog appears then the install program is unable to find a valid installation of ShipConstructor in the selected folder. This may be because the wrong folder was selected, or the ShipConstructor installed on the server was incomplete, or the internal folders were renamed. In the last two cases the server version must be reinstalled.



- Next, the install program will ask you to choose a location to which to install the demo and template projects. Once you have located the folder click on **Next** to continue.



- Next you are given the option of selecting a program folder where the ShipConstructor shortcuts will be placed on the Start menu. Click **Next** when you have selected a folder name.



- This completes the options and the install process will run.

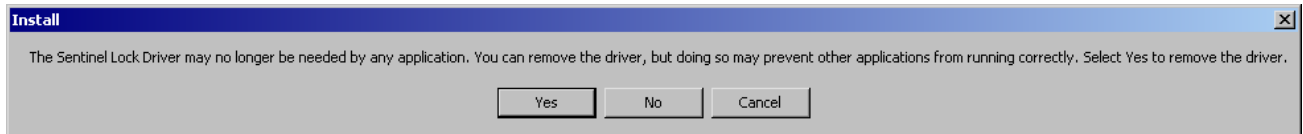
Updating, Repairing and Removing ShipConstructor2001

Once **ShipConstructor2001** is installed it can be updated, repaired or removed by launching the **ShipConstructor2001** install again.

Modify - Change which components of ShipConstructor you have installed.

Repair - Reinstall your ShipConstructor components.

Remove - Uninstall all ShipConstructor components. If you choose remove you will be asked if you wish to remove all components, after clicking on **OK**, the following dialog will be displayed.



Removing the lock driver may cause other applications including other versions of **ShipConstructor** to stop working correctly. If you wish to remove, click **Yes**, otherwise click **No** if you wish to leave the driver but continue with the uninstall. Alternatively, click **Cancel** to abort the uninstall.

Install AutoNest Demo

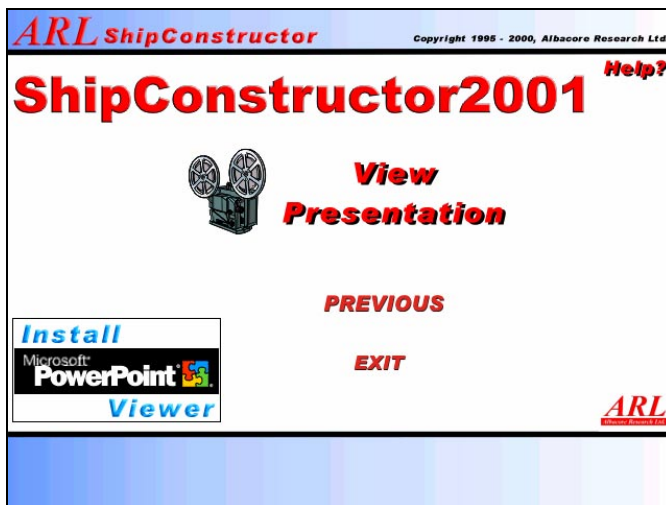
From the **ShipConstructor2000** install screen select **Install AutoNest Demo**, which will launch the installer for AutoNest from Radan Systems. AutoNest is an automatic nesting program that can be used through CAD-Link to automatically nest previously generated parts. This will allow you to try the AutoNest software with the demo Project. Please contact ARL if you are interested in purchasing a copy of AutoNest for use with ShipConstructor.

Install Lock Drivers

To use ShipConstructor2001 with

Product Presentation

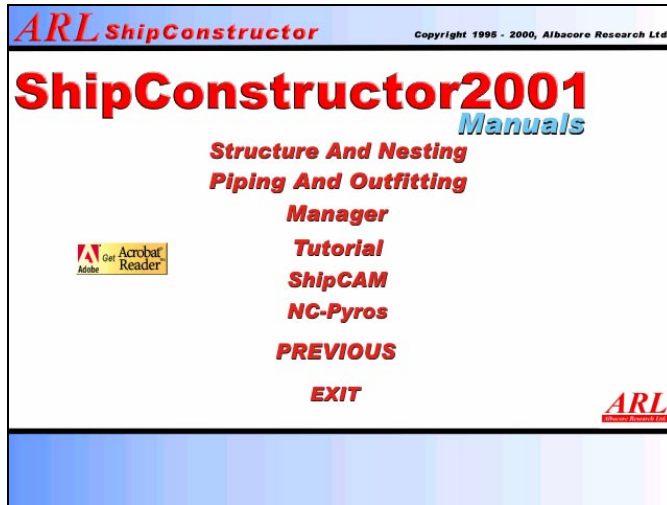
At the bottom left of the **ShipConstructor2001** install screen is a button which will open the **Product Presentation** screen.



If you don't have PowerPoint installed on your computer you can click on the **Install Viewer** button to install a viewing only version of PowerPoint. To view the presentation demonstrating many of the features of **ShipConstructor2001** click on **View Presentation**.

Product Documentation

Clicking on the **Product Documentation** button on the **ShipConstructor2001** install screen will bring up the **Documentation** screen seen below.



If you don't have Acrobat Reader 4.01 or later from Adobe installed you can install version 4.01 by clicking on the **Acrobat Reader** button to the left. All manuals can be viewed in .PDF format by clicking on the appropriate button.

Installing ShipConstructor2000 Components

Select **ShipConstructor2000** from the initial installation menu.



ShipConstructor2000 Options

Install ShipConstructor2000 - Installs ShipConstructor2000 or any of its components.

Install Microsoft Access 2000 Runtime - Installs the Microsoft Access 2000 runtime files. Use this option if you do not have MS Access 2000 on your computer.

Install Lock Drivers - Installs the Lock Drivers. Needs to be installed on all machines that will run ShipConstructor.

Install AutoNest Demo - Installs the AutoNest Demo.

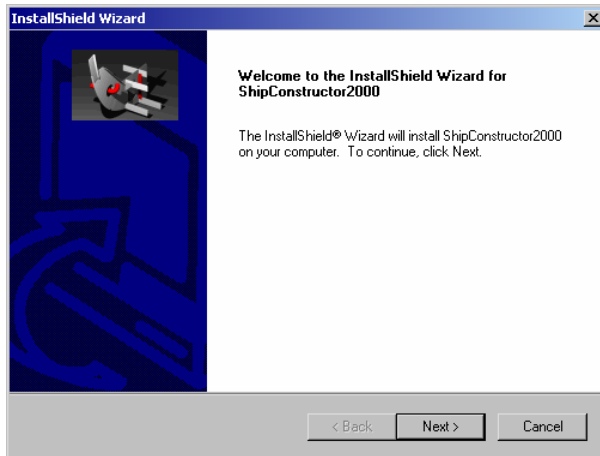
Product Presentation - PowerPoint2000 Presentation (PowerPoint viewer should be installed if PowerPoint is not installed).

Product Documentation - Acrobat reader and .PDF versions of all the manuals.

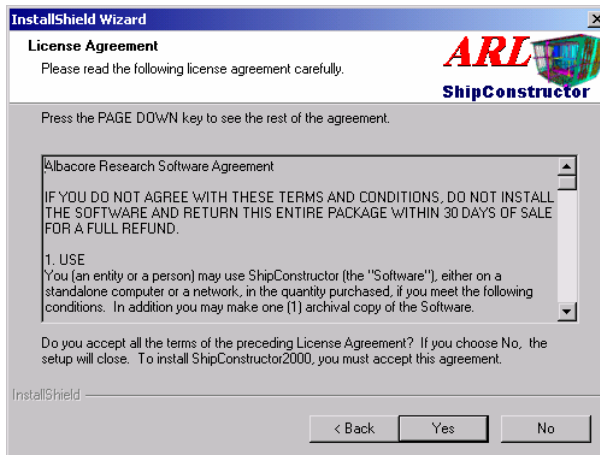
Install ShipConstructor2000

Click on **Install ShipConstructor2000** to begin the ShipConstructor2000 installation.

1. The **ShipConstructor2000** startup screen shows the following window. To continue with the installation click on **Next**. To cancel the installation at any time click on **Cancel**.

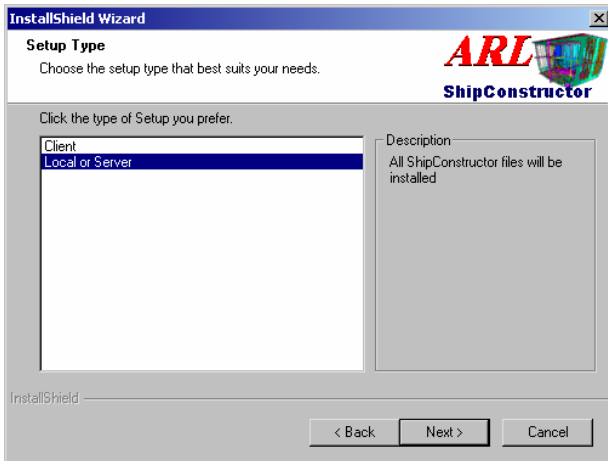


2. The **ShipConstructor2000** setup startup screen shows the following window which displays the License Agreement. Please read the agreement carefully before clicking on **Next** to continue.

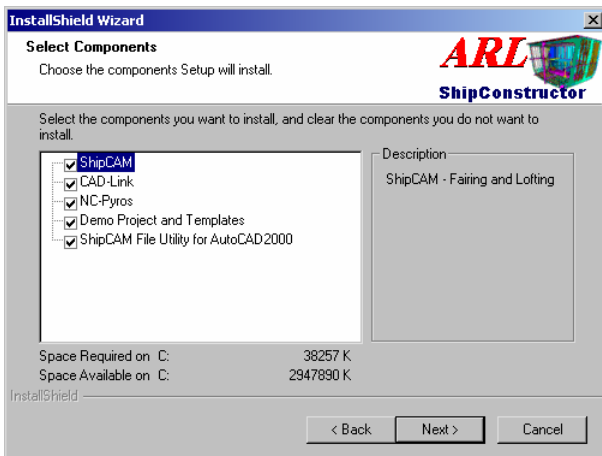


3. The next screen allows you to select from several options.
 - **Client** - Installs the necessary components on the current workstation for **ShipConstructor2000** to be run from a server. This type of installation must be run only after **ShipConstructor2000** is installed on the server.
 - **Server or Stand-alone** - Installs the entire **ShipConstructor2000** programs and demo project. Use this option if you are installing **ShipConstructor2000** for the first time. Use this type of installation if you intend to run **ShipConstructor2000** in a network environment or a single-user environment.

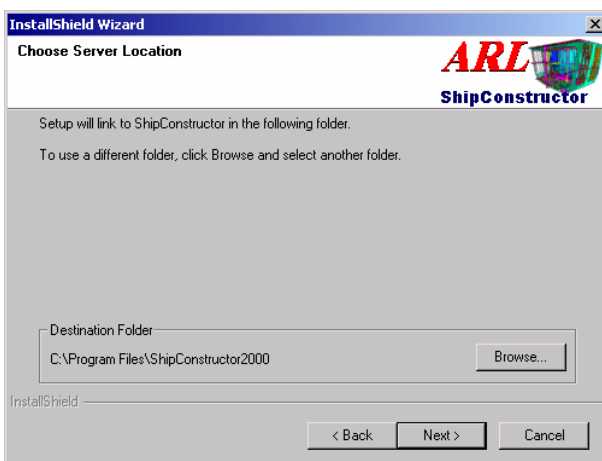
Choose one of the options, and then click **Next** to continue.



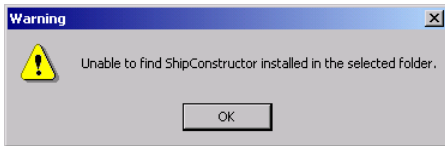
4. Next choose which components of **ShipConstructor2000** to install. When you have finished choosing your options click on **Next**.



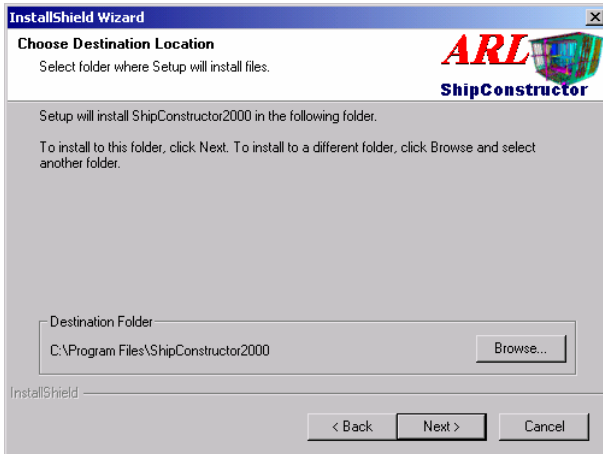
5. If you are installing the **Client** version of **ShipConstructor2000** the install program will ask you to locate the ShipConstructor2000 installation on the server. Once you have located the folder click on **Next** to continue.



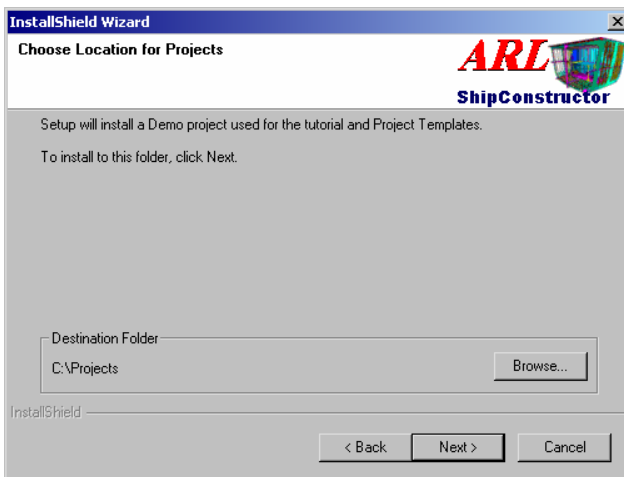
6. If the following message dialog appears then the install program is unable to find a valid installation of ShipConstructor in the selected folder. This may be because the wrong folder was selected, or the ShipConstructor installed on the server was incomplete, or the internal folders were renamed. In the last two cases the server version must be reinstalled.



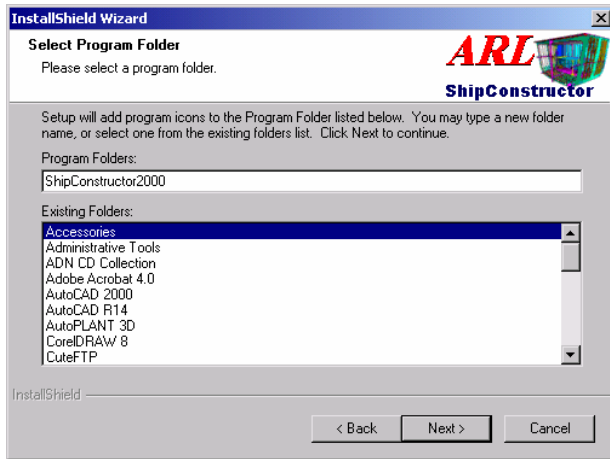
7. For the **Server** installation you will be required to enter the destination folder. Once you have entered a suitable destination click on **Next** to continue.



8. Next the install program will ask you to choose a location to install the demo and template projects. Once you have located the folder click on **Next** to continue.

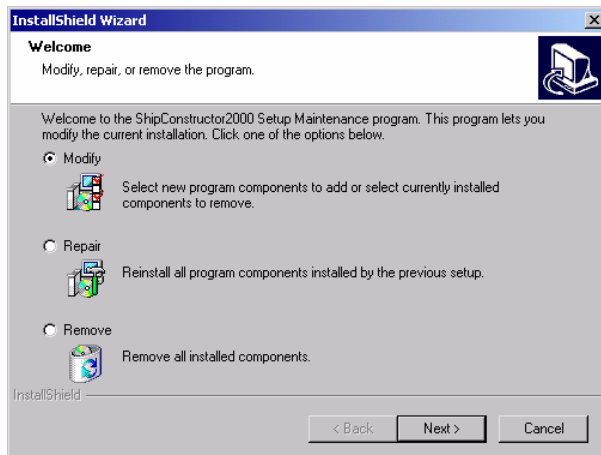


9. Next you are given the option of selecting a program folder where the ShipConstructor shortcuts will be placed on the Start menu. Click **Next** when you have selected a folder name and the installation will begin.



Updating, Repairing and Removing ShipConstructor2000

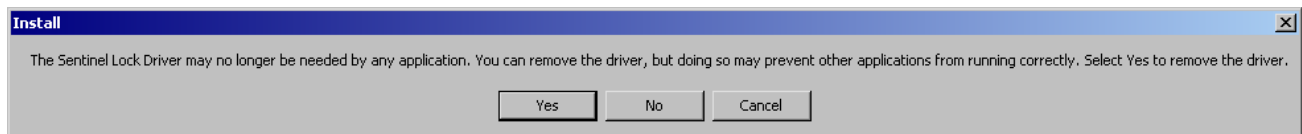
Once **ShipConstructor2000** is installed it can be updated, repaired, or removed by launching the ShipConstructor2000 install again.



Modify - Change which components of ShipConstructor you have installed.

Repair - Reinstall your ShipConstructor components.

Remove - Uninstall all ShipConstructor components. If you choose remove you will be asked if you wish to remove all components, after clicking on **OK**, the following dialog will be displayed.



Removing the lock driver may cause other applications including other versions of **ShipConstructor** to stop working correctly. If you wish to remove, click **Yes**, otherwise click **No** if you wish to leave the driver but continue with the uninstall. Alternatively click **Cancel** to abort the uninstall.

Install AutoNest Demo

From the **ShipConstructor2000** install screen select **Install AutoNest Demo**, which will launch the installer for AutoNest from Radan Systems. AutoNest is an automatic nesting program that can be used through CAD-Link to

automatically nest previously generated parts. This will allow you to try the AutoNest software with the demo Project. Please contact ARL if you are interested in purchasing a copy of AutoNest for use with ShipConstructor.

Install Microsoft Access 2000 Runtime

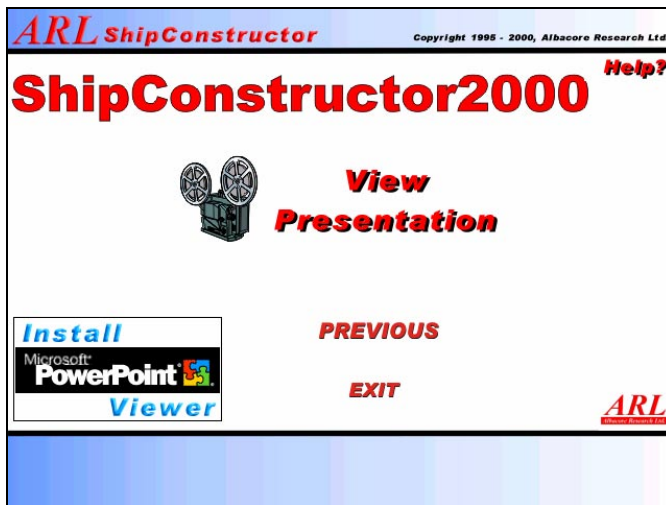
ShipConstructor2000 uses an Access 2000 Database to manage the ship production process. If you don't have Access 2000 installed you will need to install the runtime version of Access 2000 which will allow you to use the ShipReport interface to the Database. To install click on **Install Microsoft Access 2000 Runtime**.

Install Lock Drivers

The licensing portion of ShipConstructor requires the installation of the software that interfaces with the hardware locks on your machines parallel port. Every machine that requires the use of a hardware lock, including network lock servers, requires this software to be installed. The setup can be accessed from the 2000 and 2001 menus of the installation program or directly on the CD-ROM at '<CD-ROM drive>:\Locks\setup.exe' There are no user-configurable options with the lock software.

Product Presentation

At the bottom left of the **ShipConstructor2000** install screen is a button which will open the **Product Presentation** screen.

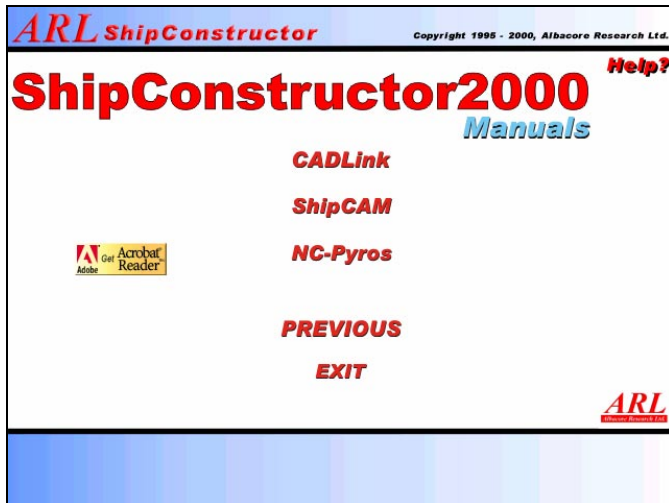


If you do not have PowerPoint installed on your computer you can click on the **Install Viewer** button to install a viewing only version of PowerPoint.

To view the presentation demonstrating many of the features of **ShipConstructor2000** click on **View Presentation**.

Product Documentation

Clicking on the **Product Documentation** button on the **ShipConstructor2000** install screen will bring up the **Documentation** screen seen below.



If you don't have Acrobat Reader from Adobe installed you can install version 4.01 by clicking on the **Acrobat Reader** button to the left. **CAD-Link2000**, **ShipCAM2000** and **NC-Pyros2000** manuals can be viewed in .PDF format by clicking on the appropriate button.

Installing the Hardware Lock *(licensed users only)*

A hardware lock is shipped with the licensed software to operate the program. Without the hardware lock the program will run in demo mode.

The hardware lock plugs into the parallel port of your computer. The lock is a pass-through device, which allows you to keep other devices connected to the parallel port (printers, etc.). Attach the end of the lock labeled **↑COMPUTER↑** to a parallel port. Tighten the screws to connect the lock securely to the port.

If you have multiple locks connected to the same parallel port, make sure this lock is the last lock in the chain (farthest from your computer).

Turn ON all devices that are connected to the lock. A device connected to the parallel port that is switched OFF prevents the proper operation of the hardware lock.

Information on DAO and Microsoft Data Access (MDAC) Components

ShipConstructor requires specific support components from Microsoft to run. The installation program automatically detects if up-to-date components are already on your system. The correct ones will be automatically installed if they are not present.

ShipConstructor2000 requires Office2000 support components. These are the MDAC v2.5 consisting of ODBC, ADO and the Microsoft Jet engine v4.0.

For ODBC, the MDAC installation program installs and configures the base 32-bit ODBC administrator v3.0.

If you are running applications that use the earlier versions of these components, problems may occur due to the upgraded drivers. If problems occur, contact the vendor of the incompatible software to obtain versions compatible with the MDAC.

Technical Support

Albacore Research Ltd. offers all customers technical support for the first 3 months after purchase. Additional support can be obtained through our maintenance and support program. In some cases our staff will offer to check out the problem with your data file. In this case it is advisable to compress the data file, for example with WinZip, and e-mail it to us. We will investigate the problem and forward a solution to you.

Office hours: 8:30 am – 5:00 pm Pacific Time

Toll-free: 1-888-210-7420

Phone: 1-250-479-3638

Fax: 1-250-479-0868

E-mail: support@ShipConstructor.com

Web: www.ShipConstructor.com